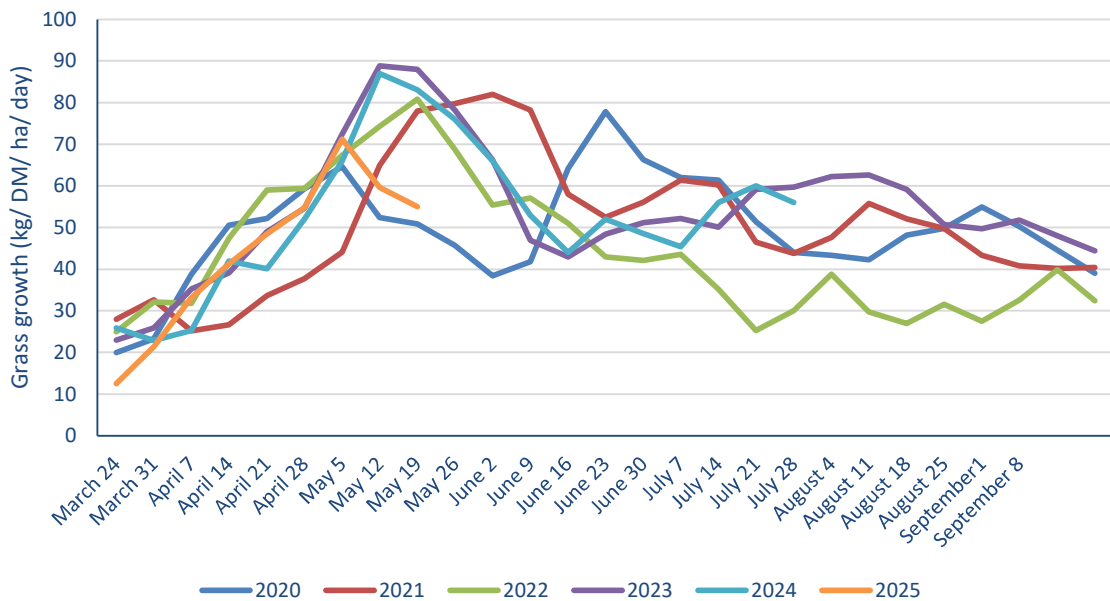


TOPGRASSBULLETIN



Regional grass growth guide Kg/ DM/ Ha /Day			
	Last Week	This week	Difference
Scotland	65	56	-9
North East	43	79	36
North West	55	51	-4
Yorkshire	55	47	-8
East Midlands	62	46	-16
East	61	53	-8
West Midlands	57	48	-9
Wales	61	58	-3
South West	65	61	-4
South East	72	51	-21



FOR THE FUTURE
OF FARMING

for
farmers

TOPGRASSBULLETIN

Area	Dry matter (g/ kg)	MELK	TDP	RFC	ME (MJ/kg dm)	Sugar (% DM)	NDF (% DM)	Oil (% DM)	Crude Protein (% DM)	IT3 (Index)
1	20.0	935	98.1	200	12.3	16.4	45.4	3.6	18.0	7.8
2	17.2	972	104.8	172	12.1	14.2	48.6	3.6	21.3	9.4
3	19.2	922	92.9	192	12.2	25.7	46.8	3.2	16.9	7.2
4	20.4	928	99.0	204	12.3	16.3	42.5	3.2	18.5	8.0
5	18.3	935	96.4	183	12.2	18.9	46.3	3.6	18.6	8.2
6	22.4	933	93.0	224	12.2	16.0	46.1	3.4	15.5	6.6
7	20.7	930	92.2	207	12.2	16.0	47.2	3.1	15.8	6.7
8	19.4	920	92.9	194	12.2	17.4	45.0	3.5	16.8	7.2



	This Week	Last Week	Difference
Dry matter	19.7	19.8	↓
MELK	934	976	↓
TDP	96.2	103.8	↓
RFC	197	191	↑
ME	12.2	12.5	↓
Sugar % DM	17.6	17.6	-
NDF % DM	46.0	46.4	↓
Oil % DM	3.39	3.73	↓
Protein % DM	17.7	20.6	↓
it3	7.62	9.31	↓

Potential milk from grazing

Fresh grass intake	(kg/day)	35	45	55	65	75
Dry matter intake	(kg/day)	7.57	9.73	11.89	14.05	16.21
Milk from grazing	(Litres/day)	3.64	7.59	11.54	15.49	19.44