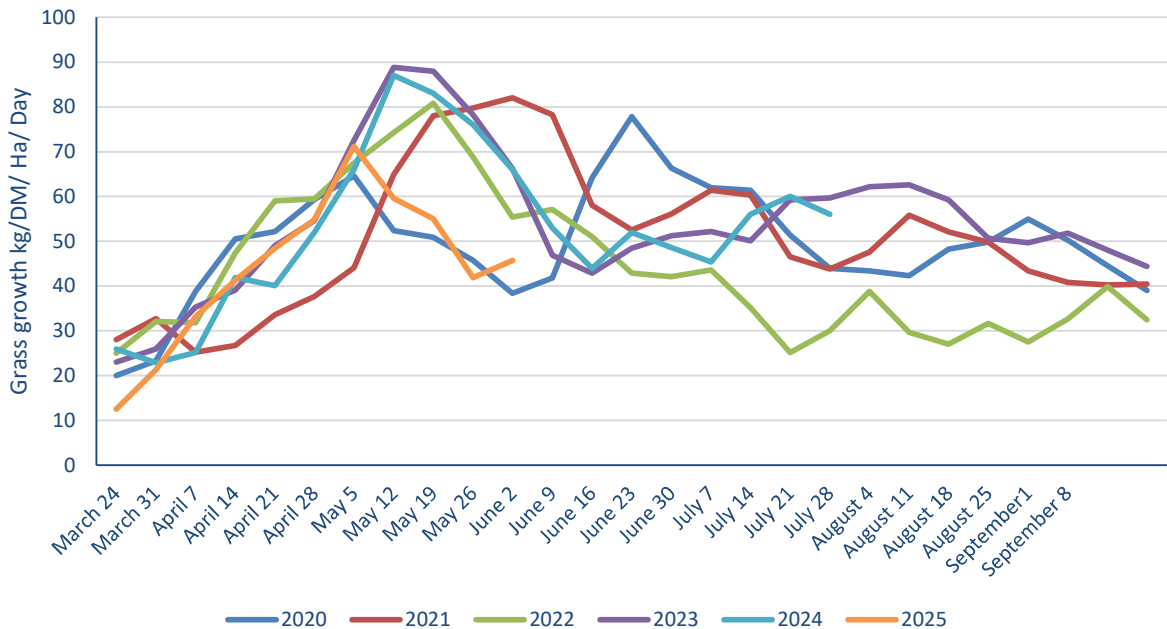


TOPGRASSBULLETIN



Powered By
AgriNet
www.AgriNet.ie

Regional grass growth guide Kg/ DM/ Ha /Day			
	Last Week	This week	Difference
Scotland	44	48	4
North East	40	47	7
North West	35	46	11
Yorkshire	34	39	5
East Midlands	42	43	1
East	43	36	-7
West Midlands	39	44	5
Wales	47	49	2
South West	47	52	5
South East	48	53	5



FOR THE FUTURE
OF FARMING

for
farmers

TOPGRASSBULLETIN

Area	Dry matter (g/ kg)	MELK	TDP	RFC	ME (MJ/kg dm)	Sugar (% DM)	NDF (% DM)	Oil (% DM)	Crude Protein (% DM)	IT3 (Index)
1	24.4	944	91.5	136	11.8	10.6	53.5	3.2	20.0	8.6
2	21.9	955	99.0	215	12.6	21.0	46.2	3.3	17.4	7.7
3	19.1	1020	110	175	12.8	15.0	47.4	3.7	24.6	11.7
4	15.3	997	107	173	12.0	14.9	50.4	3.7	22.0	9.6
5	18.9	951	96.6	162	11.8	13.9	49.9	3.5	19.8	8.5
6	18.7	1065	112	118	11.6	6.8	58.6	4.5	26.2	11.4
7	20.9	950	95.6	180	11.9	16.4	50.7	3.3	17.8	7.4
8	21.5	919	89.7	195	11.9	18.7	49.7	3.3	15.4	6.3



	This Week	Last Week	Difference
Dry matter	20.1	19.7	↑
MELK	975	934	↑
TDP	100	96.2	↑
RFC	169	197	↓
ME	12.0	12.2	↓
Sugar % DM	14.6	17.6	↓
NDF % DM	50.8	46.0	↑
Oil % DM	3.6	3.4	↑
Protein % DM	20.4	17.7	↑
it3	8.9	7.6	↑

		Potential milk from grazing				
Fresh grass intake	(kg/day)	35	45	55	65	75
Dry matter intake	(kg/day)	7.03	9.04	11.05	13.06	15.07
Milk from grazing	(Litres/day)	3.22	7.06	10.89	14.73	18.56