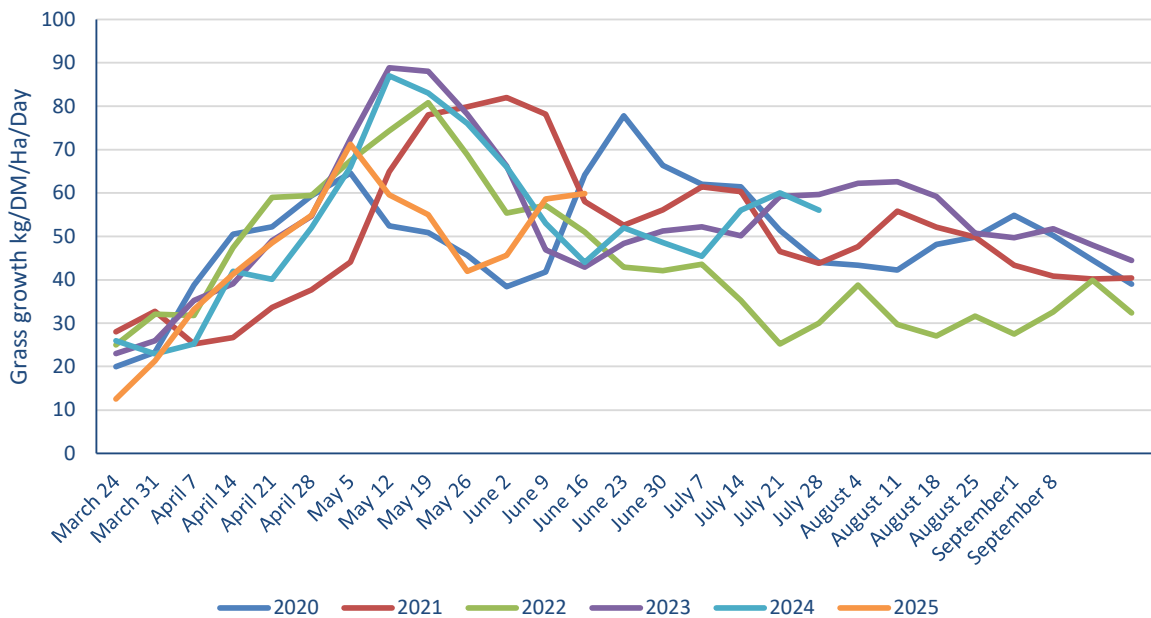


TOPGRASSBULLETIN



Powered By
AgriNet
www.AgriNet.ie

Regional grass growth guide Kg/ DM/ Ha /Day			
	Last Week	This week	Difference
Scotland	66	70	4
North East	70	71	1
North West	73	72	-1
Yorkshire	51	57	6
East Midlands	51	51	0
East	48	53	5
West Midlands	60	54	-6
Wales	62	60	-2
South West	50	54	4
South East	55	57	2



FOR THE FUTURE
OF FARMING

for
farmers

TOPGRASSBULLETIN

Area	Dry matter (g/ kg)	MELK	TDP	RFC	ME (MJ/kg dm)	Sugar (% DM)	NDF (% DM)	Oil (% DM)	Crude Protein (% DM)	IT3 (Index)
1	17.1	975	102	160	12.4	13.3	46.3	3.6	22.7	10.4
2	18.7	899	91	162	12.0	14.2	44.5	3.3	18.1	7.6
3	21.2	947	90	172	11.6	15.5	56.5	3.1	15.8	6.3
4	-	-	-	-	-	-	-	-	-	-
5	18.9	933	97	176	12.6	15.8	41.1	3.5	20.5	9.3
6	22.5	959	91	186	12.0	17.1	51.2	3.4	17.7	7.7
7	16.6	984	103	130	11.8	9.4	54.1	4.2	23.0	9.9
8	22.3	925	88	185	11.8	17.2	49.9	3.4	16.1	6.7



	THIS WEEK	LAST WEEK	DIFFERENCE
DRY MATTER	19.6	20.1	↓
MELK	946	975	↓
TDP	94.5	100.1	↓
RFC	167	169	↓
ME	12.0	12.0	-
SUGAR % DM	14.6	14.6	-
NDF % DM	49.1	50.8	↓
OIL % DM	3.5	3.6	↓
PROTEIN % DM	19.1	20.4	↓
IT3	8.3	8.9	↓

		Potential milk from grazing				
Fresh grass intake	(kg/day)	35	45	55	65	75
Dry matter intake	(kg/day)	6.86	8.82	10.79	12.75	14.71
Milk from grazing	(Litres/day)	2.51	6.14	9.77	13.40	17.03