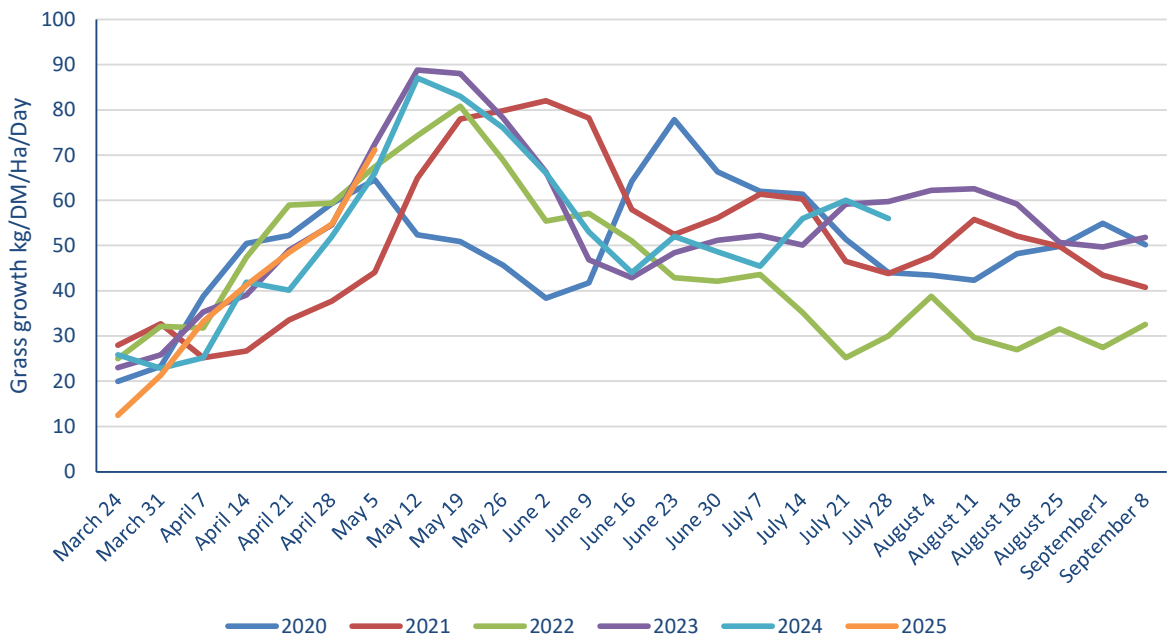


# TOPGRASSBULLETIN



Powered By  
**AgriNet**  
www.AgriNet.ie

Regional grass growth guide Kg/ DM/ Ha /Day			
	Last Week	This week	Difference
<b>Scotland</b>	55	78	23
<b>North East</b>	60	75	15
<b>North West</b>	52	64	12
<b>Yorkshire</b>	47	63	16
<b>East Midlands</b>	54	67	13
<b>East</b>	55	79	24
<b>West Midlands</b>	56	64	8
<b>Wales</b>	55	72	17
<b>South West</b>	53	70	17
<b>South East</b>	61	80	19



FOR THE FUTURE  
OF FARMING

*for*  
**farmers**

# TOPGRASSBULLETIN

Area	Dry matter (g/ kg)	MELK	TDP	RFC	ME (MJ/kg dm)	Sugar (% DM)	NDF (% DM)	Oil (% DM)	Crude Protein (% DM)	IT3 (Index)
1	17.8	971	105	182	12.5	16.4	45.9	3.7	21.6	9.8
2	19.6	1018	109	169	12.2	14.2	49.7	4.0	23.7	10.7
3	22.3	956	100	251	12.9	25.7	42.5	3.5	16.1	7.2
4	17.4	961	104	180	12.5	16.3	45.0	3.6	21.3	9.7
5	21.4	960	100	201	12.4	18.9	45.9	3.6	19.0	8.5
6	19.3	983	105	179	12.6	16.0	47.8	3.7	21.5	9.8
7	20.1	993	106	181	12.4	16.0	47.8	3.9	21.9	10.0
8	20.4	964	101	189	12.5	17.4	46.8	3.9	19.8	8.9



	This Week	Last Week
Dry matter	19.8	20.3
MELK	976	973
TDP	104	106
RFC	191	203
ME	12.5	12.6
Sugar % DM	17.6	19.2
NDF % DM	46.4	43.5
Oil % DM	3.7	3.7
Protein % DM	20.6	21.0
it3	9.3	9.6

		Potential milk from grazing				
Fresh grass intake	(kg/day)	35	45	55	65	75
Dry matter intake	(kg/day)	6.9	8.9	10.9	12.9	14.8
Milk from grazing	(Litres/day)	3.02	6.80	10.58	14.35	18.13