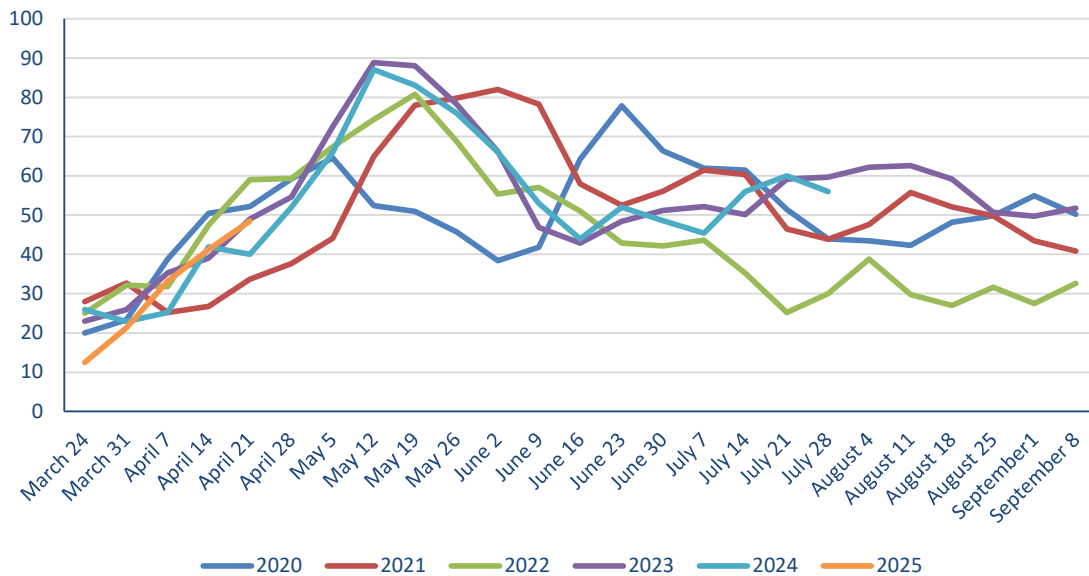


# TOPGRASSBULLETIN



Regional grass growth guide Kg/ DM/ Ha /Day			
	Last Week	This week	Difference
<b>Scotland</b>	41	50	9
<b>North East</b>	43	54	11
<b>North West</b>	41	42	1
<b>Yorkshire</b>	30	42	12
<b>East Mids</b>	46	46	0
<b>East</b>	39	53	14
<b>West Mids</b>	41	50	9
<b>Wales</b>	46	48	2
<b>South West</b>	41	48	7
<b>South East</b>	45	52	7

GB Grass growth



FOR THE FUTURE  
OF FARMING

*for*  
**farmers**

# TOPGRASSBULLETIN

Area	Dry matter (g/ kg)	MELK	TDP	RFC	ME (MJ/kg dm)	Sugar (% DM)	NDF (% DM)	Oil (% DM)	Crude Protein (% DM)	IT3 (Index)
1	18.1	993	109	216	12.6	20.7	44.9	3.6	20.6	9.4
2	20.8	946	106	199	12.6	18.8	38.8	3.3	21.6	9.9
3	20.5	928	99	204	12.7	19.6	42.8	3.8	18.2	8.1
4	16.8	1034	114	169	12.4	14.2	48.7	4.0	25.4	11.8
5	20.3	1003	109	189	12.6	17.0	46.2	4.0	22.8	10.6
6	24.6	963	106	232	12.7	23.1	40.3	3.6	19.5	8.9
7	22.1	968	104	216	12.8	21.0	43.3	3.7	19.6	9.0
8	19.7	946	104	199	12.6	18.9	42.7	3.8	20.1	9.0



	This Week	Last Week
Dry matter	20.3	20.7
MELK	973	1008
TDP	106	110
RFC	203	163
ME	12.6	12.4
Sugar % DM	19.2	13.6
NDF % DM	43.5	47.2
Oil % DM	3.7	3.9
Protein % DM	21.0	25.0
it3	9.6	11.6

		Potential milk from grazing				
Fresh grass intake	(kg/day)	35	45	55	65	75
Dry matter intake	(kg/day)	7.1	9.2	11.2	13.3	15.3
Milk from grazing	(Litres/day)	3.39	7.27	11.15	15.04	18.92