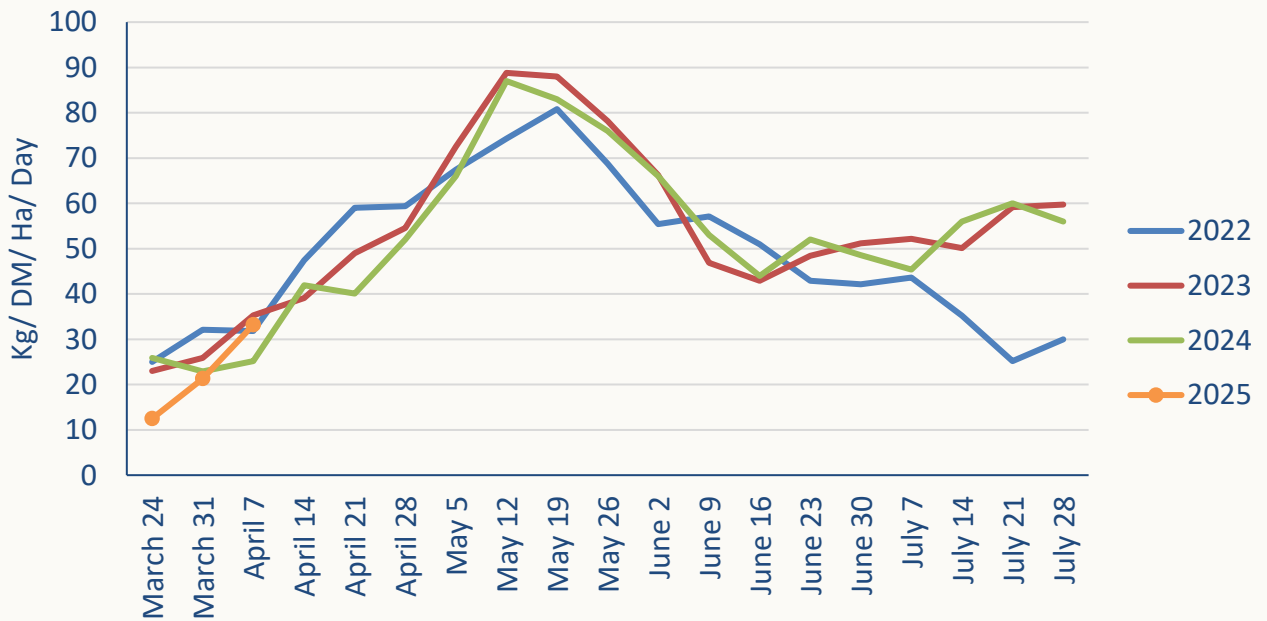


TOPGRASS BULLETIN



Regional grass growth guide Kg/ DM/ Ha /Day			
	Last Week	This week	Difference
Scotland	18	28	10
North East	16	37	21
North West	21	30	9
Yorkshire	18	26	8
East Mids	19	36	17
East	18	33	15
West Mids	27	32	5
Wales	23	35	12
South West	27	36	9
South East	26	39	13

GB Grass Growth



TOPGRASSBULLETIN

Area	Dry matter (g/kg)	MELK	TDP (g/ kg DM)	RFC (g/ kg DM)	ME (MJ/kg DM)	Sugar (% DM)	NDF (% DM)	Oil (% DM)	Crude Protein (% DM)	IT3
1	-	-	-	-	-	-	-	-	-	-
2	23.9	1010	112	146	12.0	11.3	49.8	4.30	25.3	11
3	20.0	1035	113	153	12.4	11.8	46.6	3.97	27.9	13
4	17.1	1030	112	141	12.3	10.4	49.7	4.00	26.9	13
5	20.2	1042	113	174	12.5	14.5	46.2	3.95	26.6	13
6	21.5	1018	112	166	12.6	13.9	46.5	3.55	25.8	12
7	21.6	969	105	171	12.2	15.0	46.6	4.06	22.3	10
8	20.2	954	104	193	12.5	18.1	44.7	3.75	20.3	9



	This Week	Last Week
Dry matter	20.7	23.9
MELK	1008	961
TDP	110	107
RFC	163	209
ME	12.4	12.4
Sugar % DM	13.6	20.1
NDF % DM	47.2	41.6
Oil % DM	3.9	3.55
Protein % DM	25.0	21.2
it3	11.6	9.62

			Potential milk from grazing			
Fresh grass intake	(kg/day)	35	45	55	65	75
Dry matter intake	(kg/day)	7.4	9.6	11.7	13.8	15.9
Milk from grazing	(Litres/day)	4.47	8.67	12.86	17.05	21.24