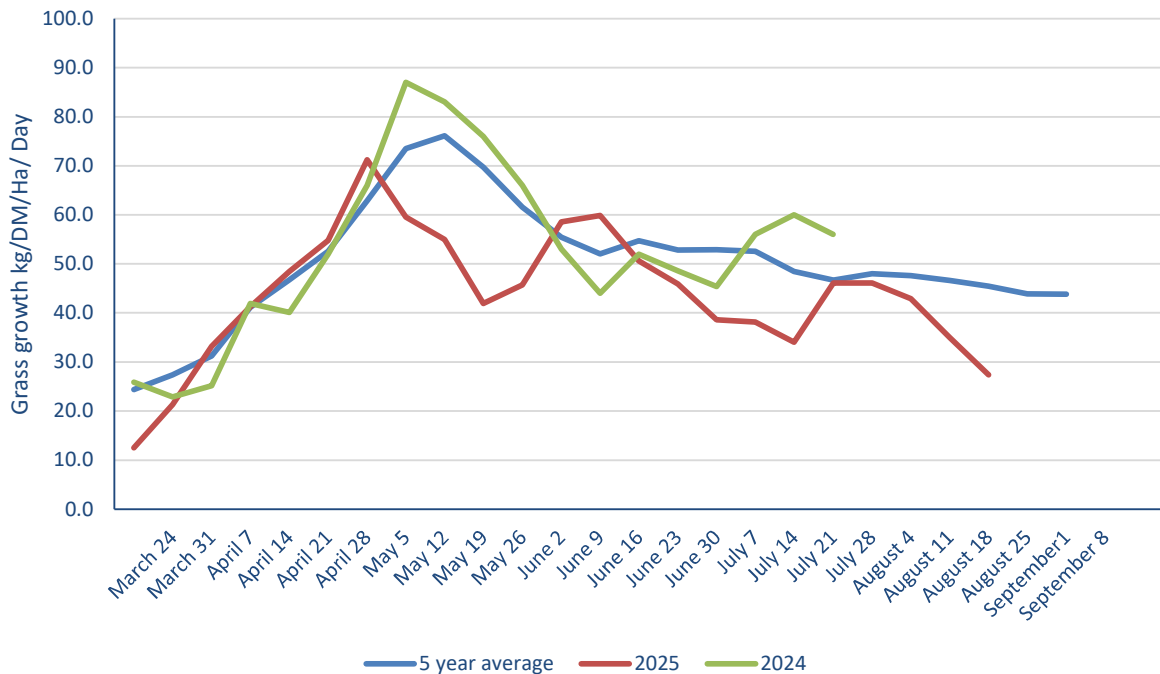


# TOPGRASSBULLETIN



Regional grass growth guide Kg/ DM/ Ha /Day			
	August 11th	August 26th	Difference
<b>Scotland</b>	56	51	-5
<b>North East</b>	47	45	-2
<b>North West</b>	47	29	-18
<b>Yorkshire</b>	41	18	-23
<b>East Midlands</b>	34	20	-14
<b>East</b>	83	26	-57
<b>West Midlands</b>	21	18	-3
<b>Wales</b>	39	27	-12
<b>South West</b>	29	19	-10
<b>South East</b>	32	21	-11



FOR THE FUTURE  
OF FARMING

*for*  
**farmers**

# TOPGRASSBULLETIN



	This Week	Last Week	Difference
Dry matter	24.8	19.0	↑
MELK	913	940	↓
TDP	83.5	91.3	↓
RFC	89.3	142	↓
ME	10.5	11.6	↓
Sugar % DM	4.70	11.5	↓
NDF % DM	57.3	51.4	↑
Oil % DM	4.38	3.91	↑
Protein % DM	22.8	20.3	↑
it3	9.16	8.62	↑

		Potential milk from grazing				
Fresh grass intake	(kg/day)	35	45	55	65	75
Dry matter intake	(kg/day)	8.7	11.1	13.6	16.1	18.6
Milk from grazing	(Litres/day)	5.28	9.70	14.1	18.5	23.0

- Grass growth has decreased nation wide over the past 7 days
- Rain is forecasted so we will likely see an uplift in grass growth over the next few weeks
- Many fields have burned/ been overgrazed – these will require time and rest to recover
- Milk from grazing remains low on farms with low cover
- Buffer feeding cows is still required
- Forage replacer blends and moist feeds are available
- For a true representation of grass quality on your farm, you must take your own sample

FOR THE FUTURE  
OF FARMING

*for*  
**farmers**