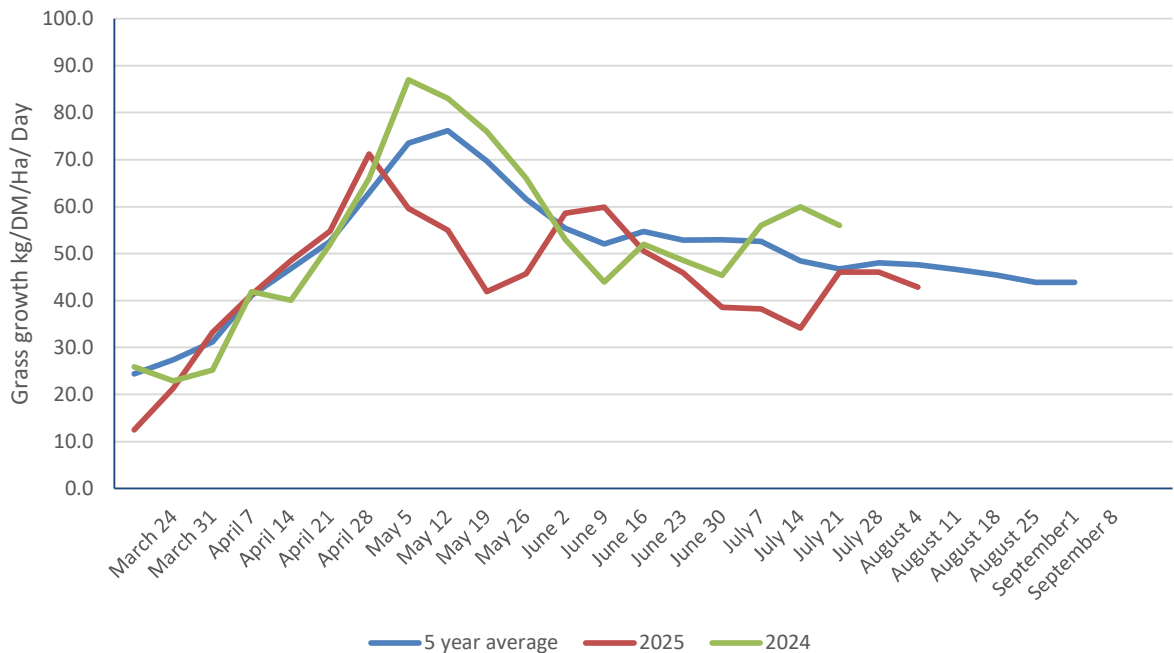


TOPGRASSBULLETIN



Regional grass growth guide Kg/ DM/ Ha /Day			
	Last Week	This week	Difference
Scotland	70	56	-14
North East	65	47	-18
North West	50	47	-3
Yorkshire	41	41	0
East Midlands	37	34	-3
East	67	83	16
West Midlands	22	21	-1
Wales	42	39	-3
South West	30	29	-1
South East	37	32	-5



FOR THE FUTURE
OF FARMING

for
farmers

TOPGRASSBULLETIN

Area	Dry matter (g/ kg)	MELK	TDP	RFC	ME (MJ/kg dm)	Sugar (% DM)	NDF (% DM)	Oil (% DM)	Crude Protein (% DM)	IT3 (Index)
1	17.3	1010	107	209	12.5	19.7	45.1	4.10	22.2	10.1
2	16.9	985	103	140	12.3	10.7	48.9	4.30	24.6	11.2
3	29.5	895	66.5	131	10.7	10.4	57.2	3.50	14.7	5.90
4	20.9	908	91.0	139	11.2	11.2	50.9	3.60	19.1	7.61
5	16.3	947	95.0	152	11.7	12.7	50.9	3.83	20.3	8.61
6	-	-	-	-	-	-	-	-	-	-
7	20.2	934	87.3	122	11.2	8.77	54.1	4.03	20.4	8.47
8	12.1	899	89.0	104	11.4	6.70	52.5	4.00	20.6	8.45



	This Week	Last Week	Difference
Dry matter	19.0	18.6	↑
MELK	940	940	-
TDP	91.3	93.3	↓
RFC	142	130	↑
ME	11.6	11.3	↑
Sugar % DM	11.5	9.7	↑
NDF % DM	51.4	52.4	↓
Oil % DM	3.91	3.95	↓
Protein % DM	20.3	21.0	↓
it3	8.62	8.74	↓

Potential milk from grazing

Fresh grass intake	(kg/day)	35	45	55	65	75
Dry matter intake	(kg/day)	6.66	8.56	10.5	12.4	14.3
Milk from grazing	(Litres/day)	2.05	5.55	9.05	12.54	16.04