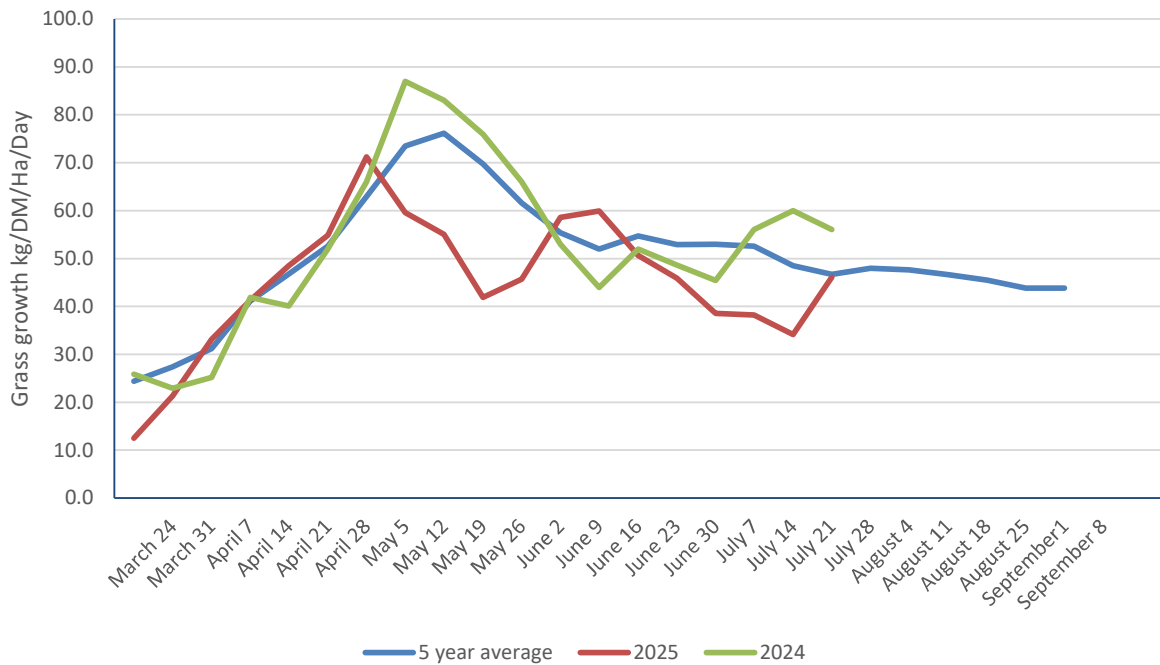


# TOPGRASSBULLETIN



Regional grass growth guide Kg/ DM/ Ha /Day			
	Last Week	This week	Difference
<b>Scotland</b>	65	68	3
<b>North East</b>	51	57	6
<b>North West</b>	40	49	9
<b>Yorkshire</b>	28	49	21
<b>East Midlands</b>	20	39	19
<b>East</b>	33	64	31
<b>West Midlands</b>	17	24	7
<b>Wales</b>	39	42	3
<b>South West</b>	22	33	11
<b>South East</b>	26	36	10



FOR THE FUTURE  
OF FARMING

*for*  
**farmers**

# TOPGRASSBULLETIN

Area	Dry matter (g/ kg)	MELK	TDP	RFC	ME (MJ/kg dm)	Sugar (% DM)	NDF (% DM)	Oil (% DM)	Crude Protein (% DM)	IT3 (Index)
1	15.3	944	94.0	153	11.9	12.9	52.0	4.20	19.4	8.25
2	19.6	974	99.5	117	11.4	7.70	55.6	4.35	22.6	9.49
3	-	-	-	-	-	-	-	-	-	-
4	13.8	949	99.5	124	11.6	8.80	50.7	4.10	23.3	9.94
5	16.5	987	104	140	11.8	10.7	50.8	4.13	24.1	10.5
6	-	-	-	-	-	-	-	-	-	-
7	27.7	886	71.0	129	10.4	10.3	55.7	3.27	15.5	5.9
8	18.8	900	92.3	115	10.9	7.93	49.4	3.67	20.9	8.3



	This Week	Last Week	Difference
Dry matter	18.6	20.8	↓
MELK	940	941	↓
TDP	93.3	90.7	↑
RFC	130	154	↓
ME	11.3	11.4	↓
Sugar % DM	9.71	12.9	↓
NDF % DM	52.4	50.9	↑
Oil % DM	3.95	3.55	↑
Protein % DM	21.0	19.5	↑
it3	8.74	8.21	↑

## Potential milk from grazing

Fresh grass intake	(kg/day)	35	45	55	65	75
Dry matter intake	(kg/day)	6.51	8.38	10.24	12.10	13.96
Milk from grazing	(Litres/day)	1.78	5.21	8.63	12.05	15.48

FOR THE FUTURE  
OF FARMING

*for*  
**farmers**