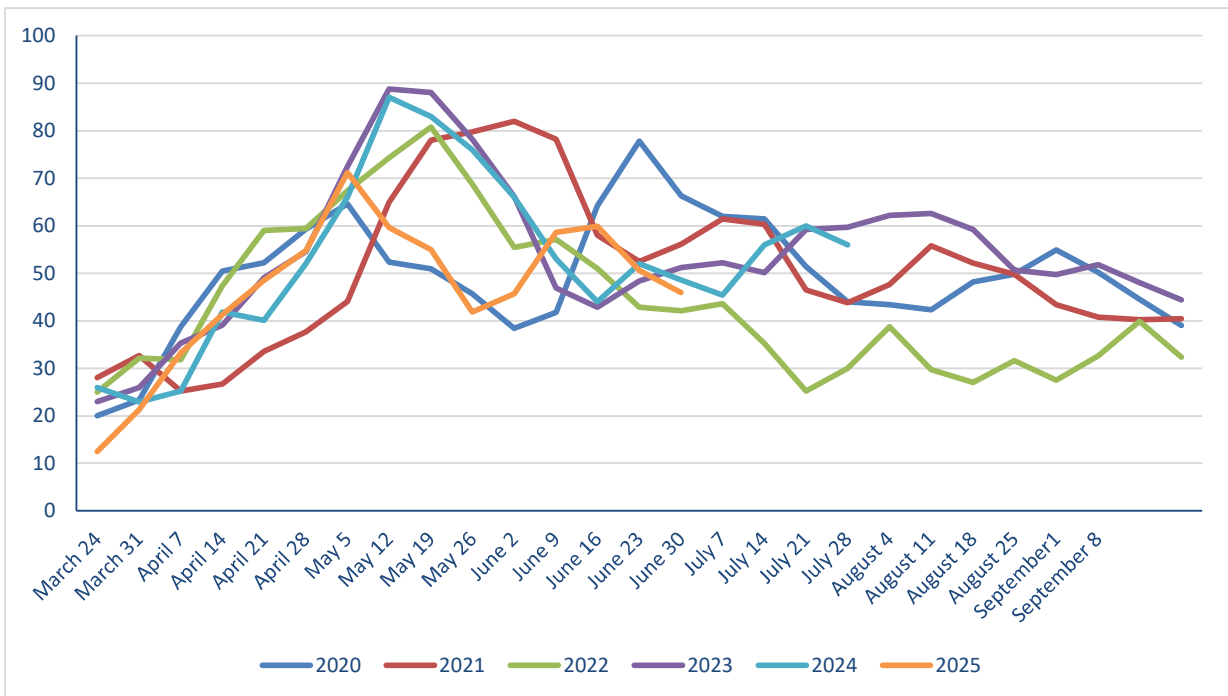


TOPGRASSBULLETIN



Regional grass growth guide Kg/ DM/ Ha /Day			
	Last Week	This week	Difference
Scotland	72	70	-2
North East	62	51	-11
North West	64	62	-2
Yorkshire	34	31	-3
East Midlands	36	32	-4
East	45	41	-4
West Midlands	36	34	-2
Wales	58	55	-3
South West	44	37	-7
South East	55	46	-9



FOR THE FUTURE
OF FARMING

for
farmers

TOPGRASSBULLETIN

Area	Dry matter (g/ kg)	MELK	TDP	RFC	ME (MJ/kg dm)	Sugar (% DM)	NDF (% DM)	Oil (% DM)	Crude Protein (% DM)	IT3 (Index)
1	16.0	950	99.3	141	11.8	11.1	47.8	3.7	22.3	9.7
2	32.6	869	63.0	139	10.3	11.8	58.0	2.7	12.5	4.5
3	23.0	871	76.3	139	11.3	11.7	54.3	3.6	14.5	5.6
4	17.7	965	100.7	138	11.5	10.7	51.9	3.9	22.3	9.4
5	16.2	991	103.3	135	11.8	10.0	51.7	3.8	24.0	10.6
6	-	-	-	-	-	-	-	-	-	-
7	25.3	942	90.0	162	11.5	14.0	52.9	3.7	18.2	7.5
8	17.5	948	96.0	150	11.8	12.4	51.2	3.7	20.4	8.7



	THIS WEEK	LAST WEEK	DIFFERENCE
DRY MATTER	21.2	19.6	↑
MELK	934	946	↓
TDP	89.8	94.5	↓
RFC	143	167	↓
ME	11.4	12.0	↓
SUGAR % DM	11.6	14.6	↓
NDF % DM	52.5	49.1	↑
OIL % DM	3.6	3.5	↑
PROTEIN % DM	19.2	19.1	↑
IT3	8.0	8.3	↓

Potential milk from grazing						
Fresh grass intake	(kg/day)	35	45	55	65	75
Dry matter intake	(kg/day)	7.41	9.52	11.6	13.8	15.9
Milk from grazing	(Litres/day)	3.34	7.21	11.1	14.9	18.8