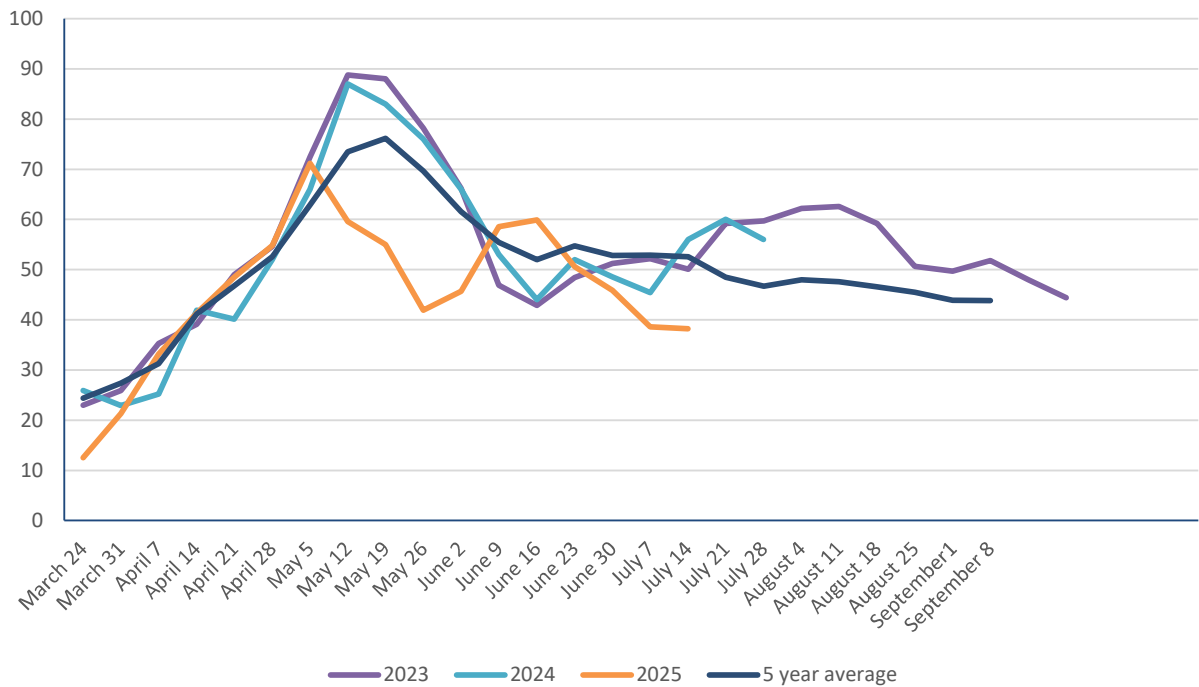


TOPGRASSBULLETIN



Regional grass growth guide Kg/ DM/ Ha /Day			
	Last Week	This week	Difference
Scotland	67	72	5
North East	42	46	4
North West	49	53	4
Yorkshire	32	26	-6
East Midlands	19	23	4
East	39	39	0
West Midlands	24	19	-5
Wales	47	46	-1
South West	29	24	-5
South East	38	34	-4



FOR THE FUTURE OF FARMING

for farmers

TOPGRASSBULLETIN

Area	Dry matter (g/ kg)	MELK	TDP	RFC	ME (MJ/kg dm)	Sugar (% DM)	NDF (% DM)	Oil (% DM)	Crude Protein (% DM)	IT3 (Index)
1	15.1	992	105	149.0	12.1	11.9	48.9	3.90	24.5	11.0
2	22.8	930	82.3	140	11.1	11.3	54.0	3.50	18.4	7.69
3	28.5	866	63.0	148	10.3	12.8	54.9	2.70	12.2	4.30
4	19.7	970	102	170	11.8	14.8	47.5	3.40	22.0	9.56
5	16.4	993	106	149	11.8	11.8	51.0	3.90	23.5	10.2
6	-	-	-	-	-	-	-	-	-	-
7	21.7	940	93.0	170	11.4	15.0	49.9	3.98	18.7	7.60
8	21.7	898	84.3	150	11.3	12.8	50.0	3.47	17.5	7.10



	THIS WEEK	LAST WEEK	DIFFERENCE
DRY MATTER	20.8	21.2	↓
MELK	941	934	↑
TDP	90.7	89.8	↑
RFC	154	143	↑
ME	11.4	11.4	-
SUGAR % DM	12.9	11.6	↑
NDF % DM	50.9	52.5	↓
OIL % DM	3.55	3.6	↓
PROTEIN % DM	19.5	19.2	↑
IT3	8.21	8.0	↑

Potential milk from grazing

Fresh grass intake	(kg/day)	35	45	55	65	75
Dry matter intake	(kg/day)	7.29	9.37	11.5	13.5	15.6
Milk from grazing	(Litres/day)	3.23	7.07	10.9	14.7	18.6