

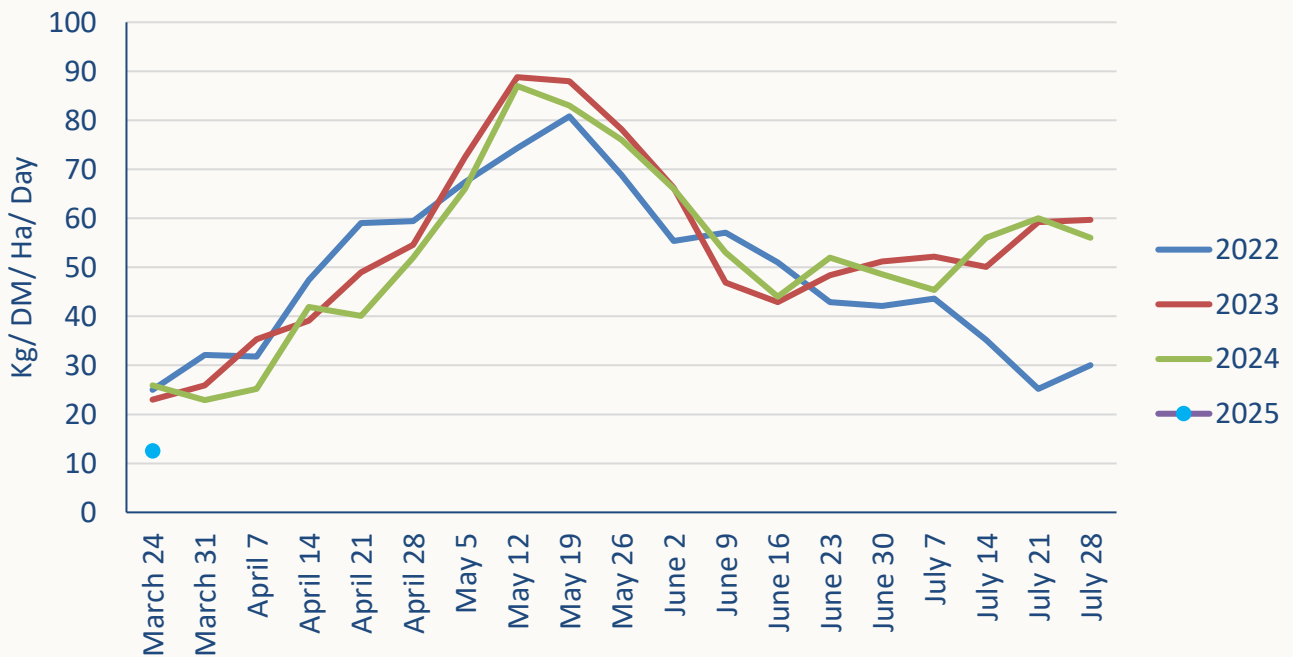
# TOPGRASSBulletin



## Regional grass growth guide Kg/ DM/ Ha /Day

Scotland	11
North East	13
North West	11
Yorkshire	6
East Mids	13
East	13
West Mids	15
Wales	13
South West	15
South East	15

GB Grass Growth



# TOPGRASSBulletin

## Grass Quality March 17

Dry matter	23.9
MELK	961
TDP	107
RFC	209
ME	12.4
Sugar % DM	20.1
NDF % DM	41.6
Oil % DM	3.55
Protein % DM	21.2
it3	9.62

- Current grass growth is below 5 year average
- Soil temperature are set to increase
- Many cows have been turned out with favourable weather conditions
- Rainfall expected end of the week
- Please refer to table below for buffer feeding requirement

	Potential milk from grazing				
Fresh grass intake (kg/ day)	35	45	55	65	75
Dry matter intake (kg/day)	8.4	10.8	13.2	15.6	18
Milk from grazing (Litres/ day)	5.6	10.1	14.6	19.1	23.6